

DISCLAIMER:
ALL PICTURES, PLANS, LAYOUTS, INFORMATION, DATA
AND DETAILS INCLUDED IN THIS BROCHURE ARE
INDICATIVE ONLY AND MAY CHANGE AT ANY TIME UP
TO THE FINAL 'AS BUILT' STATUS IN ACCORDANCE WITH
THE FINAL DESIGNS OF THE PROJECT, REGULATORY
APPROVALS AND PLANNING PERMISSIONS.

TYPICAL FLOOR PLANS



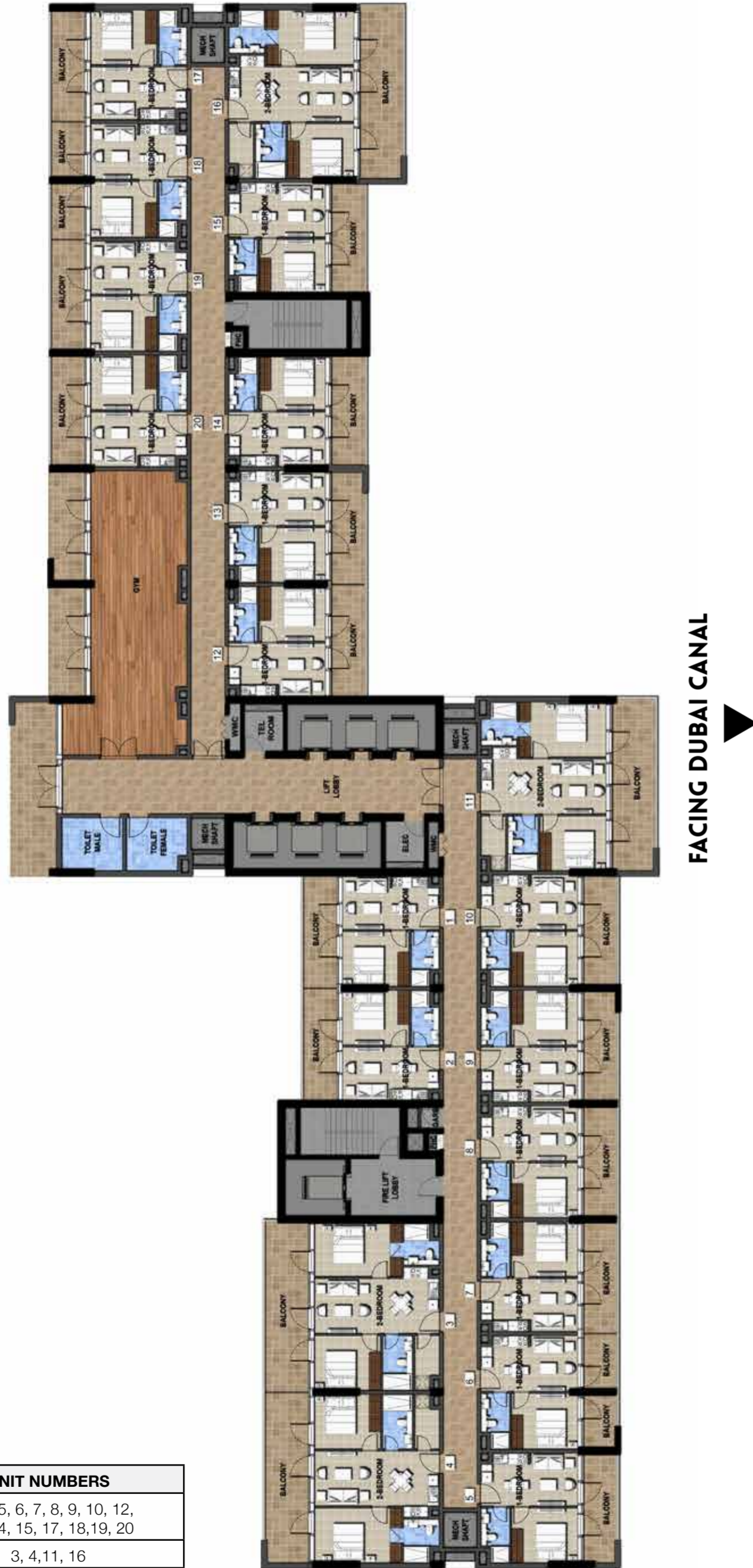
TYPICAL FLOOR PLAN

Disclaimer: All pictures, plans, layouts, information, data and details included in this brochure are indicative only and may change at any time up to the final 'as built' status in accordance with the final designs of the project, regulatory approvals and planning permissions.



FACING DOWNTOWN AND PARK VIEW

1ST FLOOR



FACING DUBAI CANAL

UNIT TYPE	UNIT NUMBERS
1 BEDROOM	1, 2, 5, 6, 7, 8, 9, 10, 12, 13, 14, 15, 17, 18, 19, 20
2 BEDROOM	3, 4, 11, 16

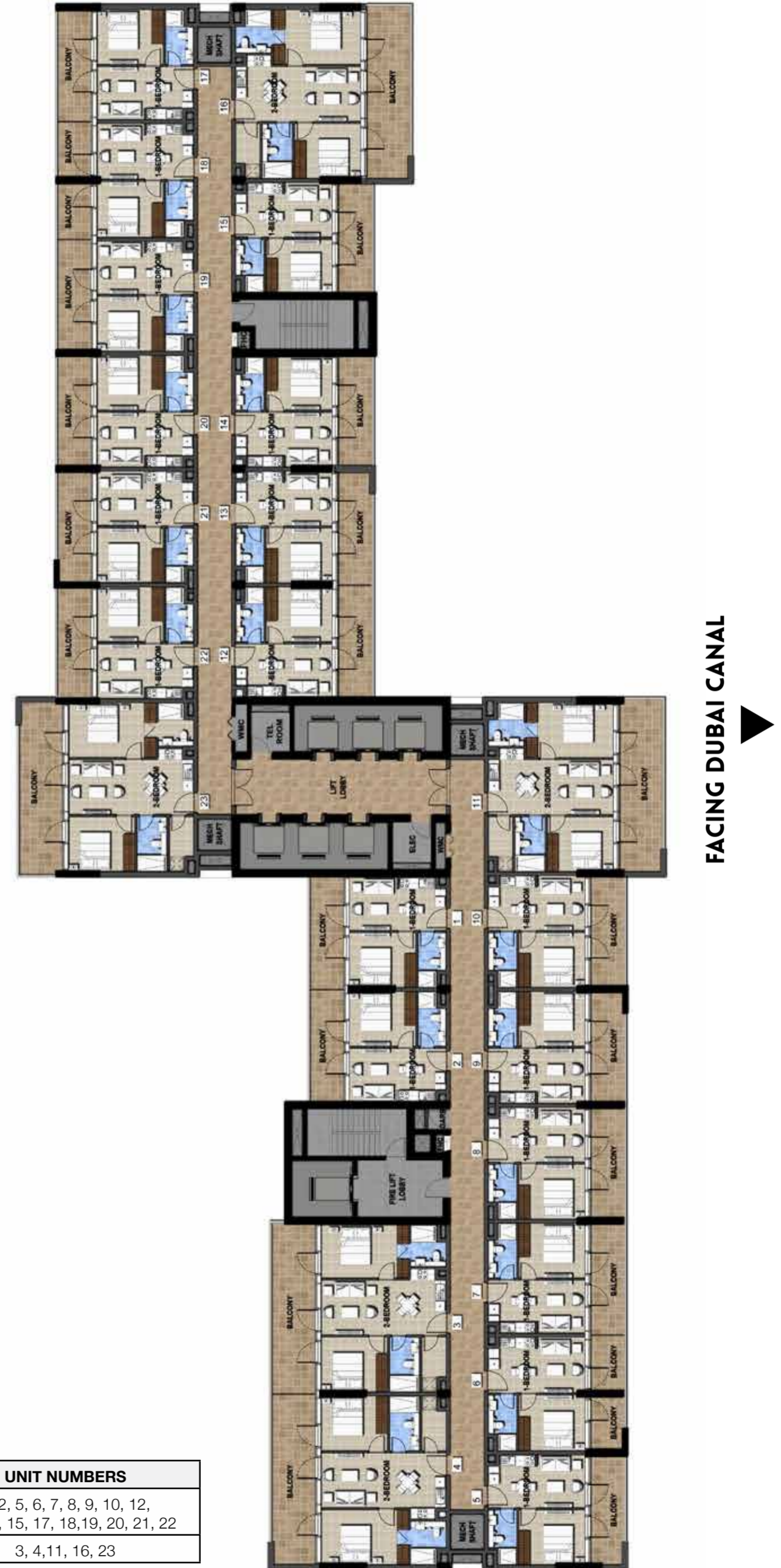
TYPICAL FLOOR PLAN

Disclaimer: All pictures, plans, layouts, information, data and details included in this brochure are indicative only and may change at any time up to the final 'as built' status in accordance with the final designs of the project, regulatory approvals and planning permissions.



FACING DOWNTOWN AND PARK VIEW

2ND - 16TH FLOOR



FACING DUBAI CANAL

UNIT TYPE	UNIT NUMBERS
1 BEDROOM	1, 2, 5, 6, 7, 8, 9, 10, 12, 13, 14, 15, 17, 18, 19, 20, 21, 22
2 BEDROOM	3, 4, 11, 16, 23

TYPICAL FLOOR PLAN

1-BED

Disclaimer: All pictures, plans, layouts, information, data and details included in this brochure are indicative only and may change at any time up to the final 'as built' status in accordance with the final designs of the project, regulatory approvals and planning permissions.

UNIT AREA	BALCONY	TOTAL
349 sqft	125 sqft	474 sqft



TYPICAL FLOOR PLAN

2-BED

Disclaimer: All pictures, plans, layouts, information, data and details included in this brochure are indicative only and may change at any time up to the final 'as built' status in accordance with the final designs of the project, regulatory approvals and planning permissions.

UNIT AREA	BALCONY	TOTAL
668 sqft	233 sqft	901 sqft

